

Owner's Manual

THE WAVELINE™  
FLUTE



JUPITER™

Specifications subject to change without notice  
[www.JUPITERmusic.com](http://www.JUPITERmusic.com)



JUPITER.



# Contents

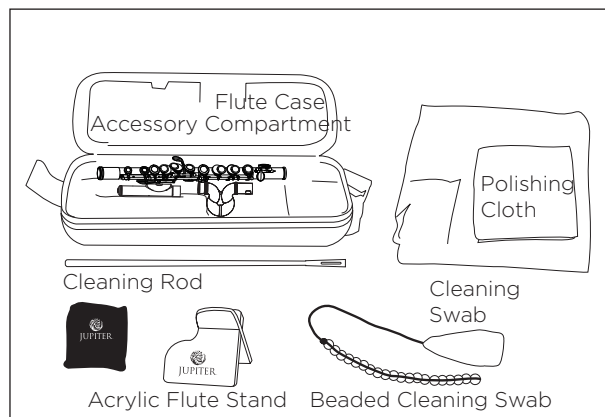
## JFL700WD Flute

- 1. Assembly 1
- 2. Disassembly 2
- 3. Inspection & Maintenance 3

## JFL700WE/WRE Flute

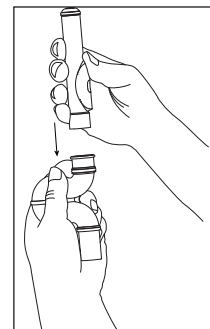
- 1. Assembly 5
- 2. Disassembly 8
- 3. Inspection & Maintenance 8
- 4. Optional Waveline™ Flute Extension Kit-JJFLH-700WX 10
- 5. How to use the Waveline™ Flute Extension Kit 11

## JFL700WD Flute

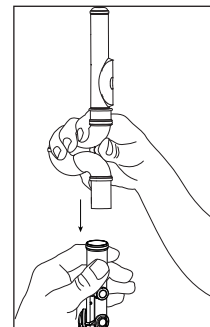


# 1 Assembly

Step 1.  
Hold the Waveline bowjoint.  
Insert headjoint into the  
Waveline bowjoint using a  
gentle twisting motion

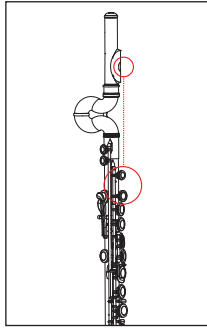


Step 2.  
Insert the Waveline bow  
headjoint assembly into the  
bodyjoint using a gentle  
twisting motion.



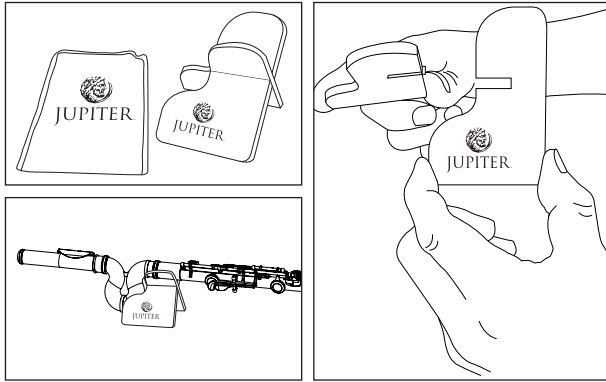
### Step 3.

Adjust the lip plate so the embouchure hole is in line with the C# key on the bodyjoint.



### Step 4.

When not playing your flute place on the acrylic flute stand included with your instrument.



## 2 Disassembly

### Step 1.

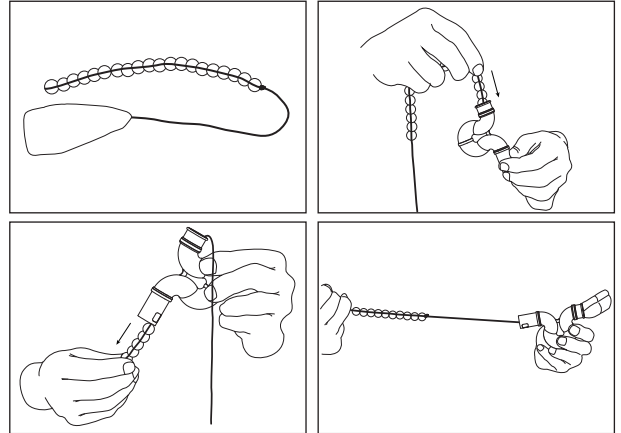
While holding the headjoint remove it from the Waveline bowjoint with a gentle twisting motion.

### Step 2.

Hold the bodyjoint and remove it from the Waveline bowjoint with a gentle twisting motion.

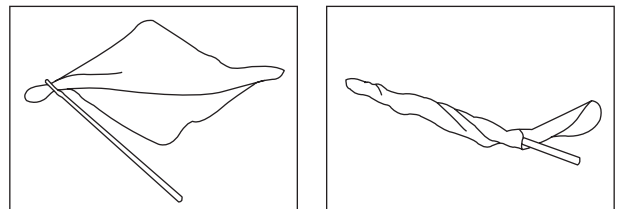
## 3 Inspection & Maintenance

1. How to clean the Waveline bowjoint  
Insert the beaded cleaning swab through the Waveline bowjoint assembly to remove excess moisture.



2. How to clean the inner tubes (headjoint, bodyjoint, and footjoint)

Pull one corner of the swab through the end of the cleaning rod. Wrap the remaining cloth around the cleaning rod.

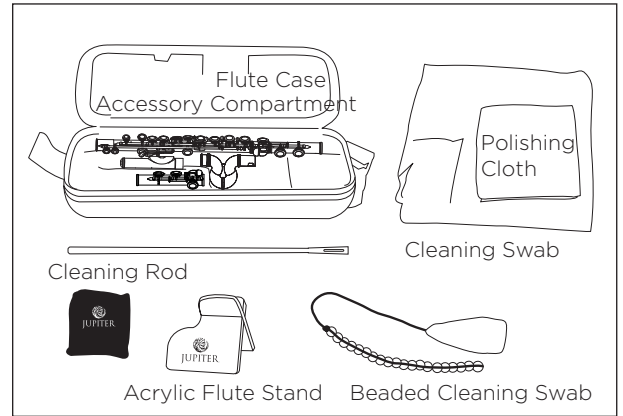
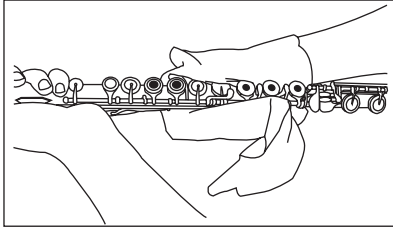


Insert the cleaning swab through the headjoint, bodyjoint, and footjoint to remove excess moisture.

## JFL700WE/WRE Flute

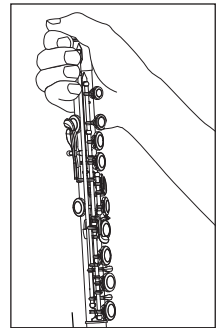
### 3. How to clean/polish the flute's surface

Wipe the instrument's surface after playing with a soft polishing cloth. When wiping, hold the instrument carefully as to not damage delicate key mechanisms or pads.

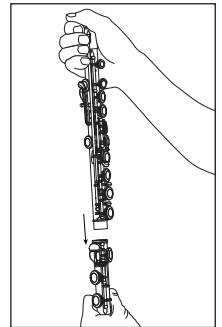


# 1 Assembly

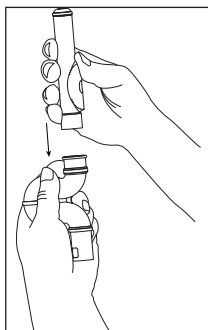
Step 1.  
Hold the barrel at the key post using the thumb and forefinger.



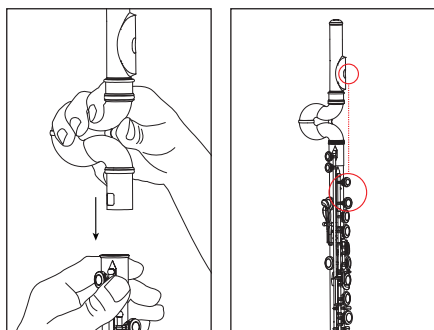
Step 2.  
Connect the footjoint to the bodyjoint using a gentle twisting motion. Avoid depressing the keys during assembly.



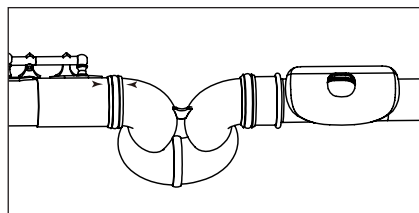
Step 3.  
Insert headjoint into the  
Waveline bowjoint using a  
gentle twisting motion.



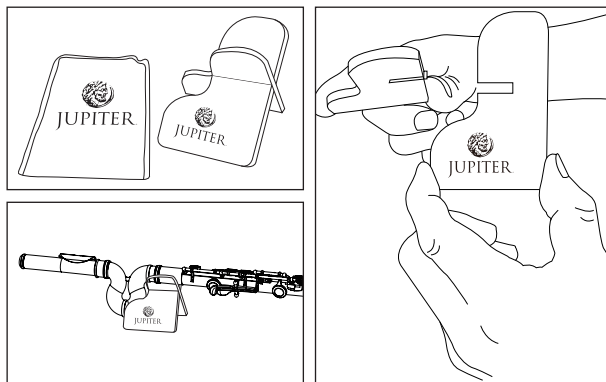
Step 4.  
Insert the Waveline bow headjoint  
assembly into the bodyjoint using a  
gentle twisting motion. Adjust the lip plate  
so the embouchure hole is in line with the C#  
key on the bodyjoint.



Step 5.  
The specially engraved alignment  
indicators  
located on the headjoint and bodyjoint  
ensure correct assembly and optimum  
position placement.



Step 6.  
When not playing your flute place on  
the acrylic flute stand included with your  
instrument.

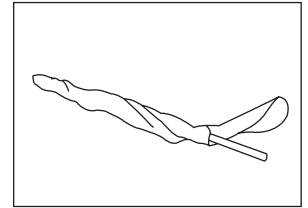
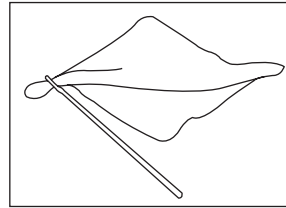


## 2 Disassembly

Step 1.  
While holding the headjoint remove it from the Waveline bowjoint with a gentle twisting motion.

Step 2.  
Hold the bodyjoint and remove it from the Waveline bowjoint with a gentle twisting motion.

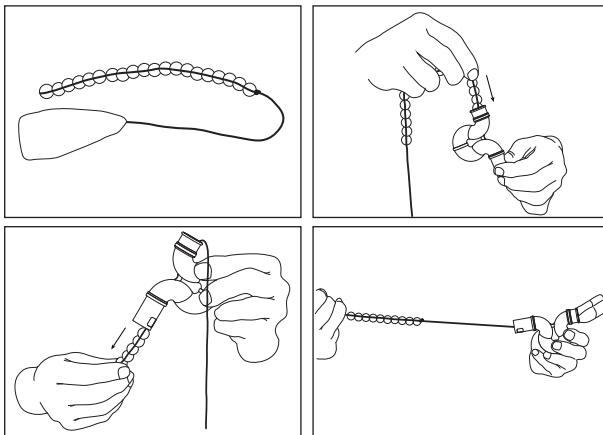
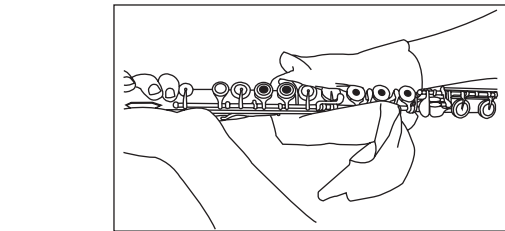
2. How to clean the inner tubes (headjoint, bodyjoint, and footjoint)  
Pull one corner of the swab through the end of the cleaning rod. Wrap the remaining cloth around the cleaning rod.



Insert the cleaning swab through the headjoint, bodyjoint, and footjoint to remove excess moisture.

## 3 Inspection & Maintenance

1. How to clean the Waveline bowjoint  
Insert the beaded cleaning swab through the Waveline bowjoint assembly to remove excess moisture.

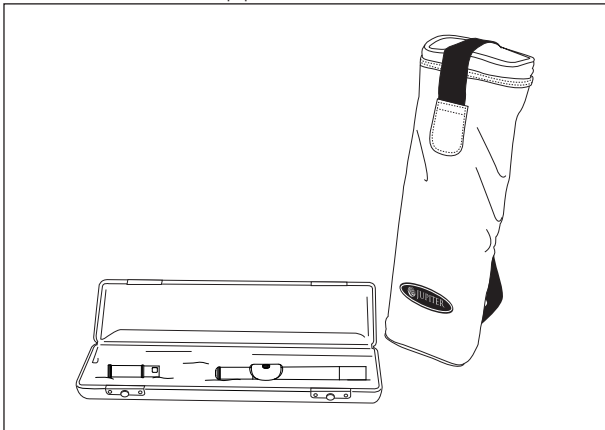


# 4 Optional Waveline™ Flute Extension Kit-JJFLH-700WX

Your JFL700WE/WRE can easily be changed into a full scale flute with a standard straight headjoint. All you need is the JJFLH-700WX Extension Kit.

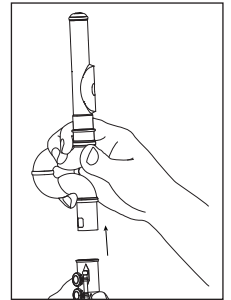
The Waveline™ Flute Extension Kit contains the following accessories:

- JUPITER Waveline™ Flute Extension Barrel
- JUPITER Straight Headjoint with .925 Sterling Riser
- JUPITER Flute Case
- JUPITER Flute Zippered Case Cover

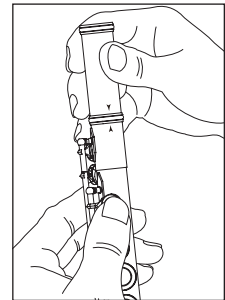
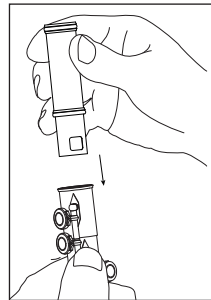


# 5 How to Use the Waveline™ Flute Extension Kit

1. Remove the Waveline bowjoint and headjoint

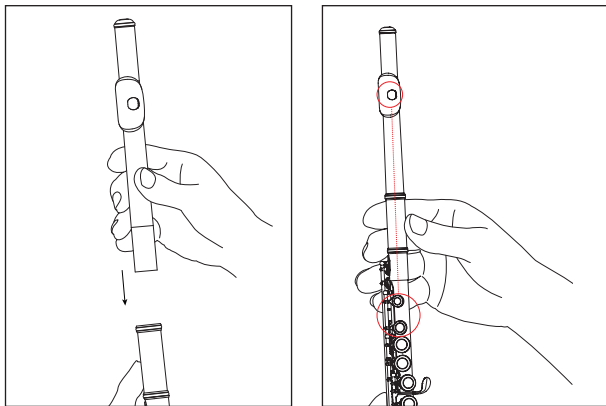


2. Insert the extension barrel.



The specially engraved alignment indicators located on the headjoint and bodyjoint ensure correct assembly and optimum position placement.

3. Insert the straight headjoint. Your extended JFL700WE/WRE is now ready to play!



4. From now on you can use your extended JFL700WE/WRE as a regular straight flute. Simply remove the straight headjoint and footjoint (the extension barrel stays in the flute) and it will fit perfectly in your JUPITER flute case and case cover.

